



# A.R.G.U.S.

**A**utomated **R**ealtime **G**rouped **U**nified **S**urveillance

Management de productie in timp real

**On line, On time and On Screen**

## Ordinea de zi

- Realitatea provocărilor unei producții astăzi
- Prezentare **A.R.G.U.S.**

# Provocări practice actuale privind productia

- *O multitudine* de instrumente de urmarire, însă fiecare include doar o parte din ce am nevoie
- Prea multe informații pot crea confuzii
- Se adresează nevoilor analiștilor
- Îmi spune ce s-a întâmplat *deja*; prea târziu pentru a influența ce se întâmplă **acum**



“Chiar trebuie să fie o soluție de monitorizare ceva atât de complicat???”  
“Nu vreau să știu decât ce este important!”

## Stăpân pe producție – ce-mi doresc eu

- Relevant pentru MINE
- Tot ce trebuie să văd, prezentat în formatul pe care-l doresc
- Noutățile importante *mă găsesc pe mine*, în loc ca eu să-mi pierd timpul căutându-le pe ele
- Îmi propune sugestii pentru etapele următoare
- În timp util pentru a influența operațiunile de afaceri; nu îmi propune doar analize de afaceri



### o **solutie** :

- pe baza căruia se poate acționa
- în timp real
- utila ...

# Rolul evolutiv al sistemelor de monitorizare

**De la:**

---

Analize



**La:**

---

Utilizare universală

Date istorice



Date predictive, în timp real

Perspectivă  
fragmentată



Perspectivă unitară asupra  
companiei

Raportarea rezultatelor



Optimizarea proceselor de  
afaceri pe baza unei înțelegeri  
reale

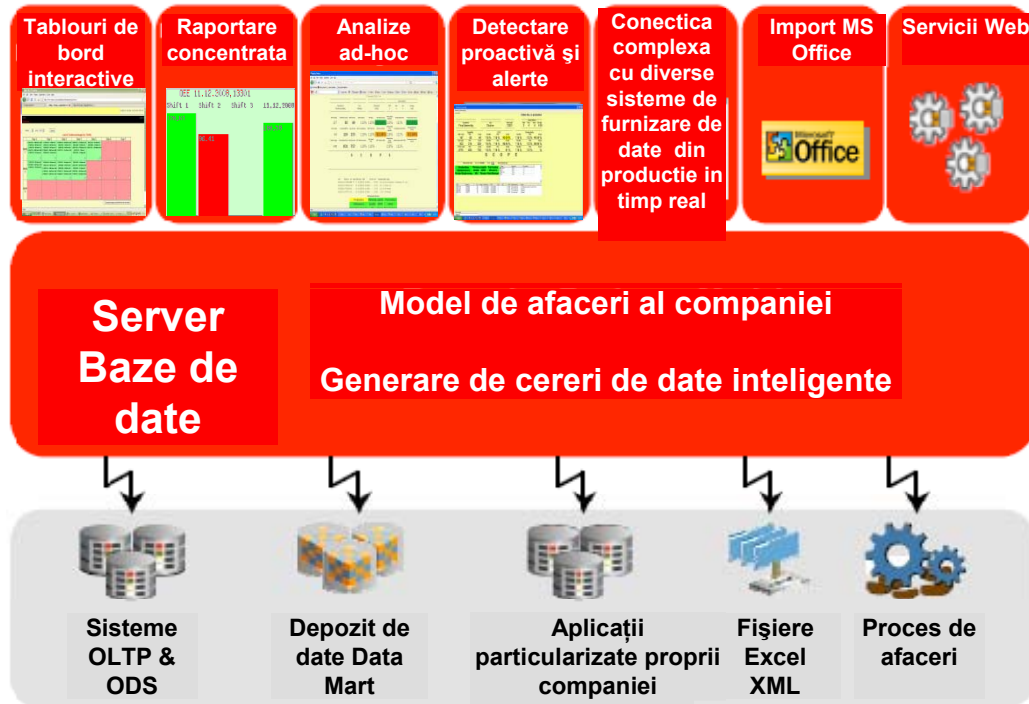
## Ordinea de zi

- Realitatea provocărilor unei productii astazi
- Prezentare **A.R.G.U.S.**

# Arhitectura de generația următoare

Vă aduce în mod transparent o perspectivă actualizată asupra performanțelor de afaceri

## Avantaje:

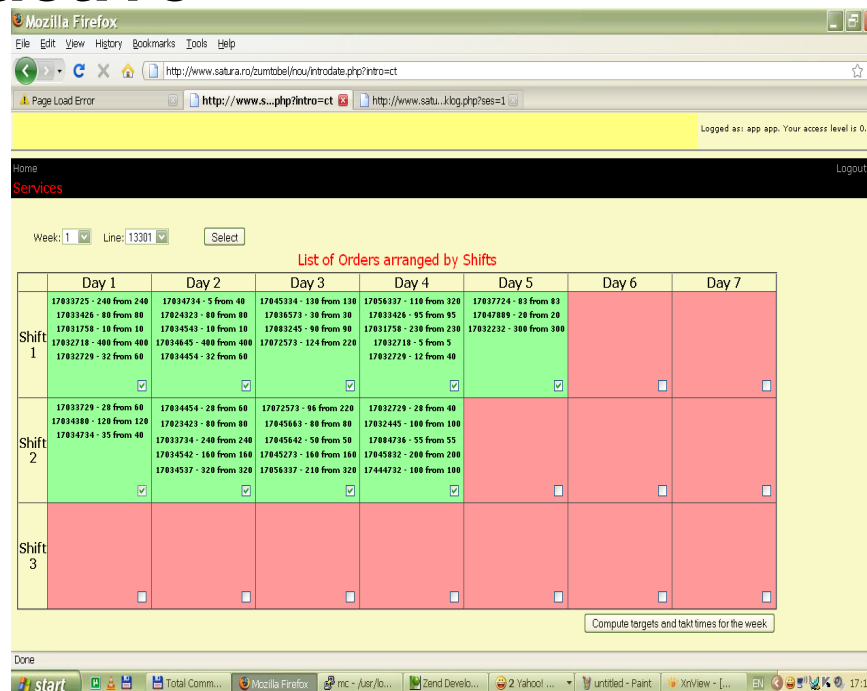


- ✓ O soluție completă, fără compromisuri
- ✓ Interfață cuprinzătoare, ușor de utilizat
- ✓ “Sistem proactiv, pe baza căruia se poate acționa”
- ✓ O perspectivă cuprinzătoare asupra tuturor datelor, indiferent de loc, facilitează sincronizarea activităților
- ✓ Coerența și transparența datelor esențiale și indicatori de performanță-cheie pentru fiecare instrument sau interfață
- ✓ Acces la date tehnologice eterogene
- ✓ Performanța și calitatea datelor depozitului
- ✓ În plus, acces în timp real la date operaționale pentru a monitoriza și administra procesele de afaceri operaționale pe măsură ce au loc

# Tablouri de bord interactive

Cea mai prietenoasă interfață

- Complet interactivă, cu o ușurință în utilizare fără egal
- Particularizabilă până la nivelul cel mai detaliat pentru fiecare utilizator
- “Informatii tradiționale” (Indicatori de performanță-cheie), *plus* acces la date în direct, în timp real cu un singur click
- Capacitățile de “analitică ghidată” furnizează legături inteligente pentru a-i ajuta pe utilizatori în căutările și în acțiunile lor



Logged as: app app. Your access level is 0.

Home Logout

Services

Week: 1 Line: 13301 Select

List of Orders arranged by Shifts

	Day 1	Day 2	Day 3	Day 4	Day 5	Day 6	Day 7
Shift 1	17803725 - 240 from 240 17803426 - 80 from 80 17803750 - 18 from 18 178032718 - 400 from 400 178032720 - 32 from 80	17804734 - 5 from 40 178024523 - 80 from 80 178034543 - 18 from 18 178034845 - 400 from 400 17804454 - 32 from 80	17805334 - 130 from 130 17805573 - 90 from 80 17803245 - 90 from 90 17802573 - 124 from 220	178056937 - 110 from 320 17803426 - 95 from 95 17803750 - 230 from 230 17802718 - 5 from 5 178032720 - 12 from 40	178037724 - 83 from 83 178047889 - 20 from 20 17802232 - 300 from 300		
Shift 2	17803720 - 20 from 60 17804300 - 120 from 120 17804734 - 35 from 40	17804454 - 28 from 60 17802423 - 80 from 80 17803734 - 240 from 240 17804542 - 180 from 180 17804537 - 320 from 320	17802573 - 96 from 220 17805663 - 80 from 80 17805641 - 50 from 50 17805273 - 160 from 160 17805137 - 210 from 320	17803720 - 28 from 40 17802445 - 100 from 100 17804736 - 55 from 55 17804832 - 200 from 200 17444732 - 100 from 100			
Shift 3							

Compute targets and takt times for the week

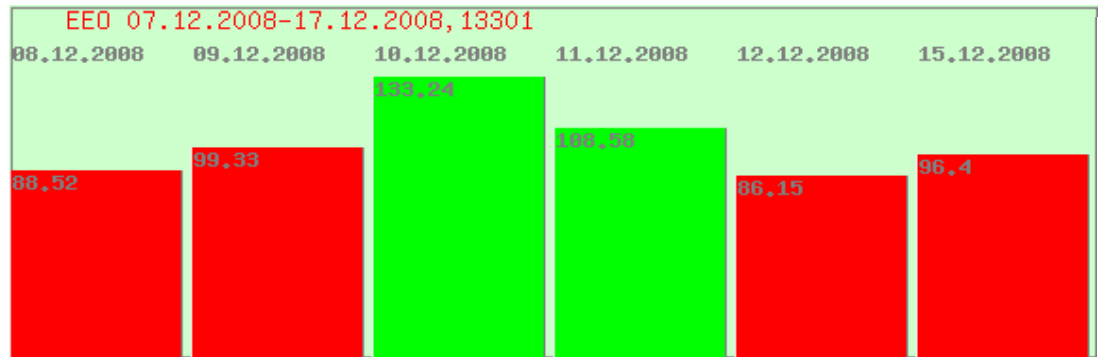
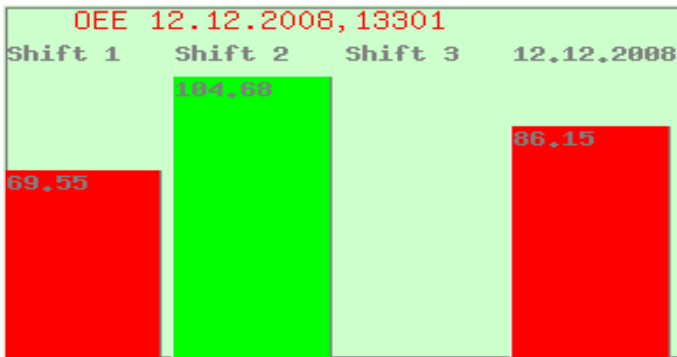
**În direct.  
În timp real.  
Pe deplin interactiv.**

Informații personalizate, pe baza cărora se poate acționa, pentru cele mai largi audiențe

# Raportare concentrata

Încorporarea cunoștințelor și a abilităților analitice într-o soluție “ ușor de utilizat”

- creare de analize concentrate in functie de necesitatile fiecarei companii
- permite urmarirea indicatorilor de productie importanti direct fara efort



Logged as: app app. Your access level is 0.

Home [Manage the Employees](#) [Logout](#)

[Manage Departments](#)

Departments List:  Modify Department:  Add New Department:

ID: Name:

3 - MARKETING

Logged as: app app. Your access level is 0.

Home [Services](#) [Logout](#)

Week: 1 Line: 13301

List of Orders arranged by Shifts

	Day 1	Day 2	Day 3	Day 4	Day 5	Day 6	Day 7	
Shift 1	17033725 - 240 from 240 17033426 - 80 from 80 17031758 - 10 from 10 17032718 - 400 from 400 17032729 - 32 from 60	17034734 - 5 from 40 17024323 - 80 from 80 17034543 - 10 from 10 17034645 - 400 from 400 17034454 - 32 from 60	17045334 - 130 from 130 17030573 - 30 from 30 17083245 - 90 from 90 1702573 - 124 from 220	17056337 - 110 from 320 17033426 - 95 from 95 17031758 - 230 from 230 17032718 - 5 from 5 17032729 - 12 from 40	17037224 - 83 from 83 17033426 - 95 from 95 17047889 - 20 from 20			
Shift 2	17033729 - 28 from 60 17034380 - 120 from 120 17034734 - 35 from 40	17034454 - 28 from 60 17023423 - 80 from 80 17033734 - 240 from 240 17034542 - 160 from 160 17034537 - 320 from 320	17072573 - 96 from 220 17045663 - 80 from 80 17045642 - 50 from 50 17045273 - 160 from 160 17056337 - 210 from 320	17032729 - 28 from 40 17032445 - 100 from 100 17084736 - 55 from 55				
Shift 3								

# Analiza ad hoc

**“Tablouri de bord simplificate care conțin ceea ce vă trebuie DUMNEAVOASTRĂ – simplu, ușor și accesibil**

Mozilla Firefox  
 http://146.108.199.200/rapoarte.php?intro=w&idlinie=9  
 17 December 2008 17:46

Department			Area			Workcenter			Direct workers			
Final Assembly			Chalice			13301			Shift 2	Plan 4	Now 4	Average 4.00
Shift Target	Shift Plan (STD)	Shift Actual	OEE Baseline	OEE plan	OEE Shift Actual	Productivity Baseline	Productivity Plan	Productivity Actual				
167	83	69	118%	118%	107.94%	118%	112%	107.94%				
Day Target	Day Plan (DTD)	Day Actual	OEE Day Baseline	OEE Day Plan	OEE Day Actual	Productivity Day Baseline	Productivity Day Plan	Productivity Day Actual				
303	219	233	118%	118%	92.34%	118%	112%	92.34%				
Week Target	Week Plan (WTD)	Week Actual	OEE Week Baseline	OEE Week Plan	OEE Week Actual	Productivity Week Baseline	Productivity Week Plan	Productivity Week Actual				
1450	831	757	118%	118%		118%	112%					

**S C O P E**

SKU	Order No.	Lot	Made	Order Date	RDD	RLT	ELT	SMV	Standard Hours	Status
99011918	17035582	80	21	17.12.2008	20.12.2008	3	-	14.200	18 h, 56 m	In Production - Remaining: 3 h, 29 m
96011156	17033494	160	-	18.12.2008	18.12.2008	0	-	14.733	39 h, 17 m	Next Lot
96010583	17035688	80	-	19.12.2008	20.12.2008	1	-	8.753	11 h, 40 m	Planned
96011153	17035771	80	-	19.12.2008	20.12.2008	1	-	13.500	18 h, 0 m	Planned

Workcenter Status

Production	Planning	Logistic	Purchasing
Maintenance	Quality	OPEX	EH&S

Done

start | Total... | C++... | Net... | Yahoo... | Net... | Mozl... | Laur... | Admi... | 146... | data... | Line... | effici... | 5:47 PM



# Conectica complexa cu diverse sisteme de furnizare de date din productie in timp real

1. Conectare la “pulsul” productiei direct prin intermediul sistemelor de achizitie automata a datelor
2. Modalitati variate de achizitie a datelor incepand de la sisteme bazate pe coduri de bare pana la PLC uri care furnizeaza diverse informatii utile ca de exemplu statusul unei bucati ( defect, ok sau refacere ) sau id-ul persoanei care a facut ansamblarea
3. Export de date catre sisteme de automatizare , gen imprimante cu coduri de bare pentru a putea asigura trasabilitatea intregii productii chiar si dupa ce aceasta a parasit linia efectiva de productie
4. Servicii de extragere si inserare de date in alte surse de date decat cele pe care functioneaza sistemul de monitorizare
5. Scalabilitate si modularitate nelimitata datorita arhitecturii open source ce permite oricand adaugarea de componente noi cat si interactiunea cu orice sisteme
6. Conectica cu orice tip de echipamente de afisaj datorita tehnologiei web ce poate furniza informatii in timp real inclusiv pe echipamente gen telefon mobil , laptop, PDA sau chiar integrabil cu un web site

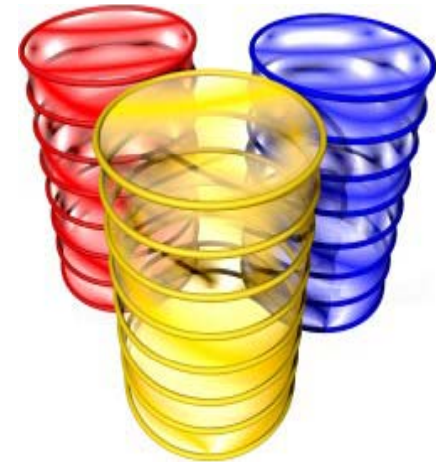
# Import MS Office



## De ce ? Pentru ca:

- Excel este cea mai folosita sursa de date in mediu business
- Utilizatorii sunt deja familiarizati cu el
- Este o metoda simpla de transport de date
- Permite o prelucrare preliminara a datelor inainte de a fi introduse in sistemul de monitorizare a productie
- Poate fi automatizat si nu implica resurse suplimentare din partea utilizatorilor

PostgreSQL



## Servicii WEB

De ce o interfata WEB ?

- Se poate accesa printr-un simplu browser
- Nu necesita mentenanta deoarece nu exista nici o instalare pe calculatorul local
- Poate fi accesata de pe orice tip de echipament, inclusiv cele portabile
- Este modular si poate fi utilizat in medii gen “statii terminal” ce duce la reducerea masiva a costurilor cu sistemele IT

# Comenzi executate

Mozilla Firefox

File Edit View History Bookmarks Tools Help

http://146.108.199.200/rapoarte.php?intro=g

Logged as: app app. Your access level is 0.

Home Logout

**Reports and charts**

**Finished Orders**

Line: All

From 17 12 2008

to 18 12 2008

Select

Finished Orders list:

Line 13302

Order No.	Lot	Start Date	Delivery Date	Status	Part No	SMV	Standard Hours
17035542	400	17.12.2008	17.12.2008	Finished	96008885	4.855	32 h, 22 m
17035630	1200	17.12.2008	18.12.2008	Finished	96008890	5.380	107 h, 36 m

Line 13301

Order No.	Lot	Start Date	Delivery Date	Status	Part No	SMV	Standard Hours
17034005	240	17.12.2008	17.12.2008	Finished	96011156	14.733	58 h, 55 m
17034958	80	17.12.2008	17.12.2008	Finished	96011155	14.330	19 h, 6 m
17035857	50	17.12.2008	17.12.2008	Finished	96107086	5.978	4 h, 58 m
17033494	160	18.12.2008	18.12.2008	Finished	96011156	14.733	39 h, 17 m

Line 13303

Order No.	Lot	Start Date	Delivery Date	Status	Part No	SMV	Standard Hours
17035376	1	17.12.2008	17.12.2008	Finished	96227137	13.783	0 h, 13 m
17035687	80	17.12.2008	18.12.2008	Finished	96010583	8.753	11 h, 40 m
17035373	10	18.12.2008	18.12.2008	Finished	96009591	12.787	2 h, 7 m

Done

start Mozilla Firefox time interval rep2... Total Commander...

EN 14:12

# Administrarea liniilor de productie

Mozilla Firefox

File Edit View History Bookmarks Tools Help

http://146.108.199.200/introdate.php?intro=1

Logged as: app app. Your access level is 0.

Home Services Logout

### Lines administration

Lines list

ID Line	Line Name	Description	OEEbaseline	OEEplanned	Planned Workers Shift 1	Planned Workers Shift 2	Planned Workers Shift 3	Productivity Baseline	Productivity Plan	
9	13301	CHALICE LOW RUNNER	118	118	4	4	4	118	112	modifica
7	13302	CHALICE HIGH RUNNER	135	132	3	4	4	135	132	modifica
10	13303	CHALICE SMALL SERIES	145	105	1	1	1	145	105	modifica
8	test	test	100	100	4	4	4	100	100	modifica

#### Modify a line

ID line:

Line Name:

Description:

OEEbaseline:

OEEplanned:

Planned Workers Shift 1:

Planned Workers Shift 2:

Planned Workers Shift 3:

Productivity Baseline:

Productivity Plan:

#### Add a new line

Line Name:

Description:

OEEbaseline:

OEEplanned:

Planned Workers Shift 1:

Planned Workers Shift 2:

Planned Workers Shift 3:

Productivity Baseline:

Productivity Plan:

Done

start Mozilla Firefox Total Comm... c - utzu@14... Zend Develo... 146.108.199... input by tim... to do curtici ... EN 14:08

## Vizualizarea starii comenzilor

Mozilla Firefox

File Edit View History Bookmarks Tools Help

http://146.108.199.200/rapoarte.php?intro=vo&ordernomodif=17035684&actiune=detalii&linie=&detalii=

Logged as: app app. Your access level is 0.

Home Logout

Reports and charts

View Orders

Line 13301

Order No.	Lot	Start Date	Actual Start Date	Delivery Date	Status	Part No	SMV	Standard Hours	Week	Takt Time	Priority
17035771	80	19.12.2008	19.12.2008	20.12.2008	In Production	96011153	13.500	18 h, 0 m	51	194.33	
17034650	800	20.12.2008	20.12.2008	20.12.2008	Next Lot	96008890	5.380	71 h, 44 m	51	54.46	

Line 13302

Order No.	Lot	Start Date	Actual Start Date	Delivery Date	Status	Part No	SMV	Standard Hours	Week	Takt Time	Priority
17035684	400	17.12.2008	17.12.2008	19.12.2008	In Production	96011154	14.300	95 h, 20 m	51	141.99	
		Made: 199	Remaining Pieces: 201		Remaining Time: 9 h, 34 m						
17035909	160	17.12.2008	17.12.2008	20.12.2008	Next Lot	96008889	4.322	11 h, 31 m	51	49.14	
1703596	240	19.12.2008	19.12.2008	20.12.2008	Planned	96008888	4.535	18 h, 8 m	51	45.9	
17032867	400	19.12.2008	19.12.2008	24.12.2008	Planned	96008890	5.380	35 h, 52 m	51	54.46	

Line 13303

Order No.	Lot	Start Date	Actual Start Date	Delivery Date	Status	Part No	SMV	Standard Hours	Week	Takt Time	Priority
17034961	1	19.12.2008	19.12.2008	23.12.2008	In Production	99010919	34.285	0 h, 34 m	51	352.38	
17035369	3	19.12.2008	19.12.2008	20.12.2008	Next Lot	96009586	19.580	0 h, 58 m	51	198.16	

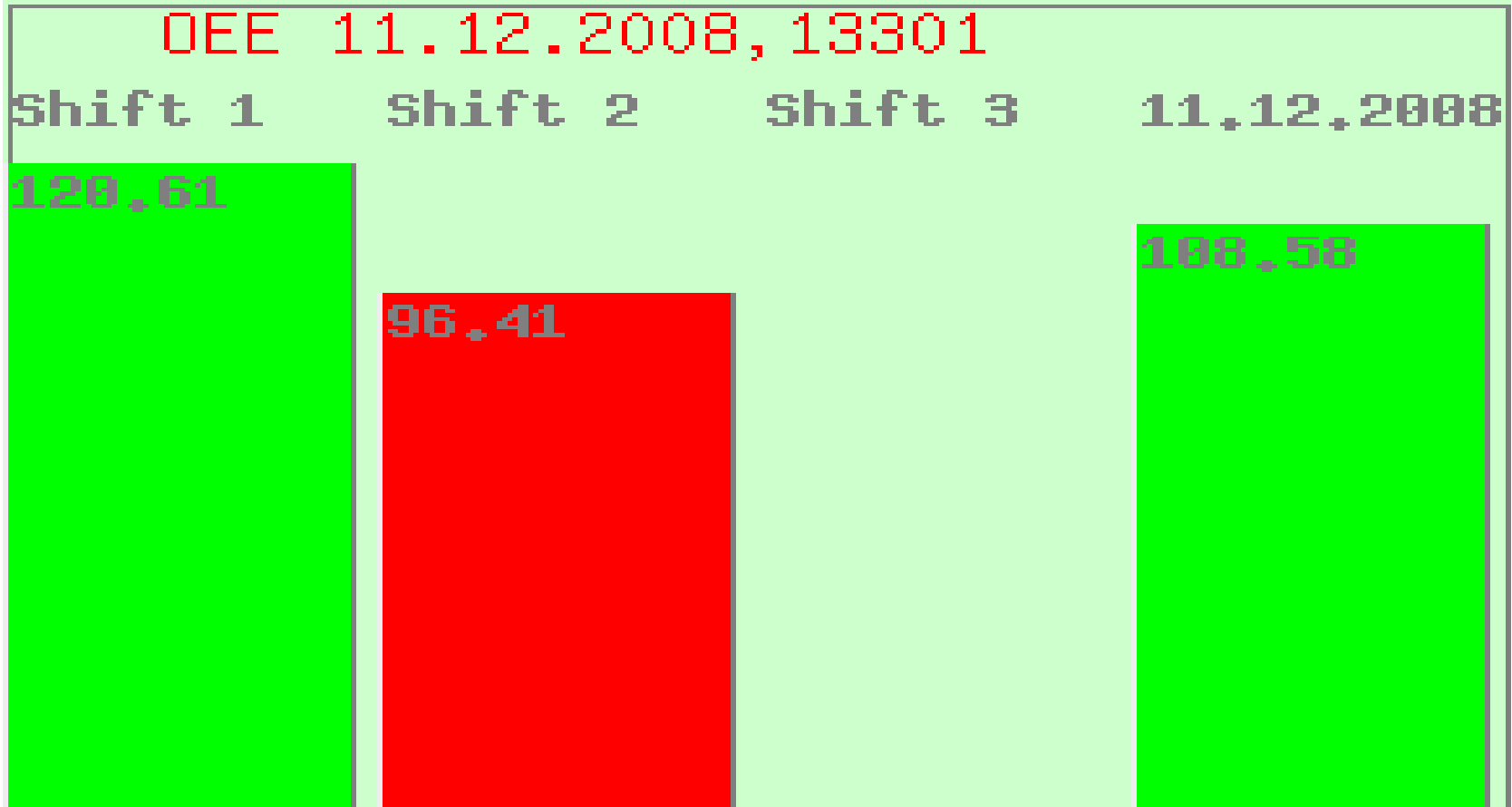
Done

start Mozilla Firefox view orders - Paint Total Commander...

EN 14:14

## Analiza complexa comparativa in functie de nevoile individuale

*Scalabilă, adaptabilă, rezistă în timp*



# Rapoarte zilnice, analiza zi de zi

*Sprijinindu-i pe utilizatori de la primirea informatiilor pana la rezolvarea problemelor cotidiene de productie*

Mozilla Firefox  
 http://146.108.199.200/rapoarte.php?intro=qq

17.12.2008  
 Active lines on 17.12.2008

Line name	Line description
13301	CHALICE LOW RUNNER
13302	CHALICE HIGH RUNNER
13303	CHALICE SMALL SERIES

13301 has OEE Baseline 118 and OEE Planned 118

Shift/Day	Available time	Actual run time	Planned down time	Availability	Act. amount produced	Expected amount	Performance efficiency	Act. amount good parts	Exp. amount good parts	Rate of prod quality	OEE
Shift 1	2037	1897	140	100	165	133.62	123.49	165	165	100	123.49
Shift 2	608	600	8	100	64	62.37	102.61	64	64	100	102.61
17.12.2008	2645	2497	148	100	229	195.99	120.61	229	229	100	120.61

13302 has OEE Baseline 135 and OEE Planned 132

Shift/Day	Available time	Actual run time	Planned down time	Availability	Act. amount produced	Expected amount	Performance efficiency	Act. amount good parts	Exp. amount good parts	Rate of prod quality	OEE
Shift 1	2044	1904	140	100	516	353.9	145.8	516	516	100	145.8
Shift 2	608	600	8	100	118	111.52	105.81	118	118	100	105.81
17.12.2008	2652	2504	148	100	634	465.42	136.22	634	634	100	136.22

13303 has OEE Baseline 145 and OEE Planned 105

Shift/Day	Available time	Actual run time	Planned down time	Availability	Act. amount produced	Expected amount	Performance efficiency	Act. amount good parts	Exp. amount good parts	Rate of prod quality	OEE
Shift 1	0	0	0	0	0	0	0	0	0	100	0
Shift 2	208	204	4	100	50	28.45	175.75	50	50	100	175.75
17.12.2008	208	204	4	100	50	28.45	175.62	50	50	100	175.62

OEE 17.12.2008, 13301

Shift	OEE
Shift 1	123.49
Shift 2	102.61
Shift 3	120.61

OEE 17.12.2008, 13302

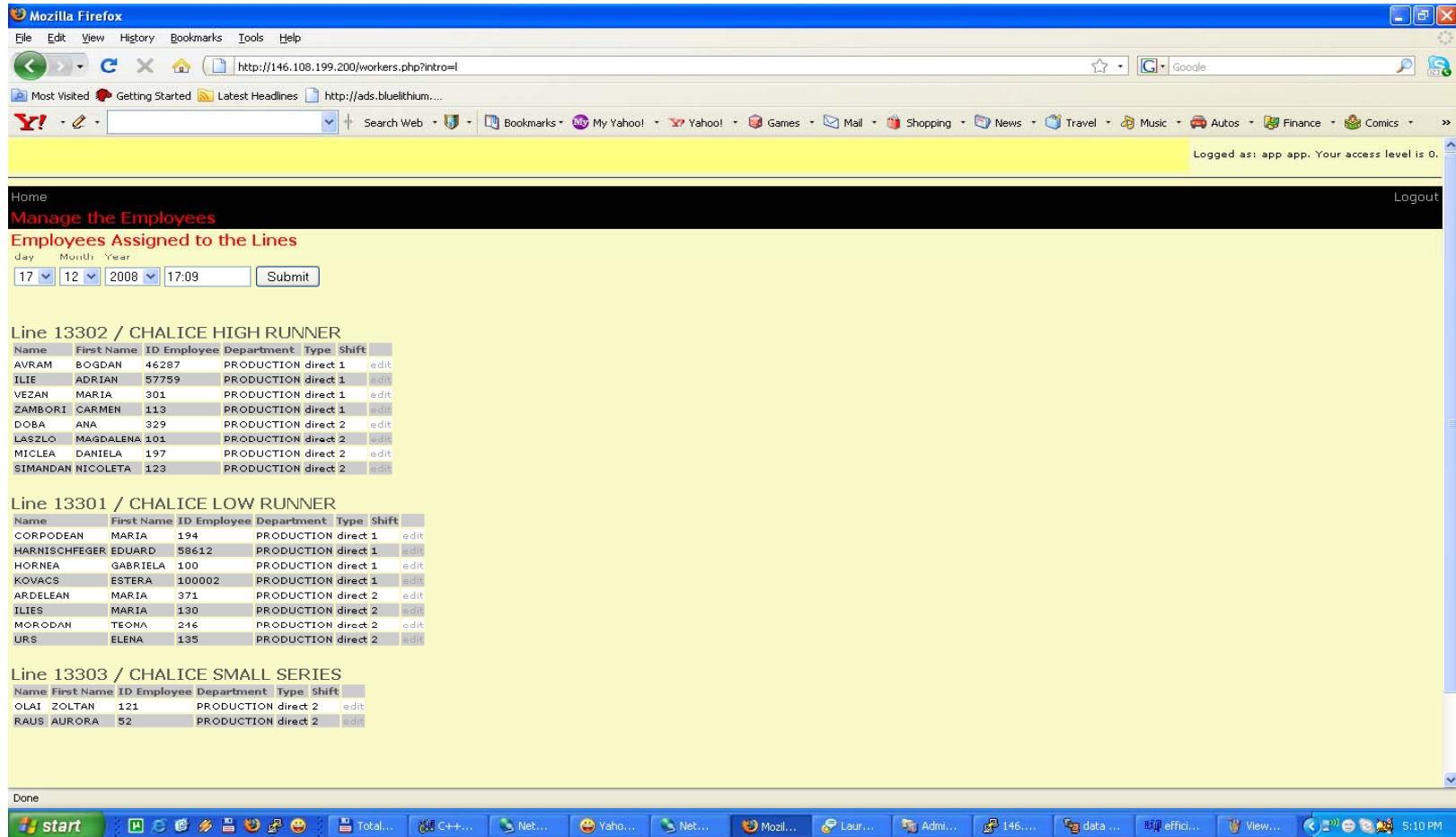
Shift	OEE
Shift 1	145.8
Shift 2	105.81
Shift 3	136.22

OEE 17.12.2008, 13303

Shift	OEE
Shift 1	0
Shift 2	175.75
Shift 3	175.62

Done

# Analize performante pe linii si pe operatori pentru realizarea optimului de productie



Home Logout

**Manage the Employees**

**Employees Assigned to the Lines**

Day: 17 | Month: 12 | Year: 2008 | Time: 17:09 |

**Line 13302 / CHALICE HIGH RUNNER**

Name	First Name	ID Employee	Department	Type	Shift	
AVRAM	BOGDAN	46287	PRODUCTION	direct 1		edit
ILIE	ADRIAN	57759	PRODUCTION	direct 1		edit
VEZAN	MARIA	301	PRODUCTION	direct 1		edit
ZAMBORI	CARMEN	113	PRODUCTION	direct 1		edit
DOBA	ANA	329	PRODUCTION	direct 2		edit
LASZLO	MAGDALENA	101	PRODUCTION	direct 2		edit
MICLEA	DANIELA	197	PRODUCTION	direct 2		edit
SIMANDAN	NICOLETA	123	PRODUCTION	direct 2		edit

**Line 13301 / CHALICE LOW RUNNER**

Name	First Name	ID Employee	Department	Type	Shift	
CORPODEAN	MARIA	194	PRODUCTION	direct 1		edit
HARNISCHFEGER	EDUARD	58612	PRODUCTION	direct 1		edit
HORNEA	GABRIELA	100	PRODUCTION	direct 1		edit
KOVACS	ESTERA	100002	PRODUCTION	direct 1		edit
ARDELEAN	MARIA	371	PRODUCTION	direct 2		edit
ILIES	MARIA	130	PRODUCTION	direct 2		edit
MORODAN	TEONA	246	PRODUCTION	direct 2		edit
URS	ELENA	135	PRODUCTION	direct 2		edit

**Line 13303 / CHALICE SMALL SERIES**

Name	First Name	ID Employee	Department	Type	Shift	
OLAI	ZOLTAN	121	PRODUCTION	direct 2		edit
RAUS	AURORA	52	PRODUCTION	direct 2		edit

# Monitorizarea in timp real a performantelor

## Vă aduce în mod transparent o perspectivă actualizată in timp real asupra performanțelor de afaceri

17 December 2008 17:46

Department			Area			Workcenter			Direct workers			
Final Assembly			Chalice			13301			Shift	Plan	Now	Average
									2	4	4	4.00
Shift Target	Shift Plan (STD)	Shift Actual	OEE Baseline	OEE plan	OEE Shift Actual	Productivity Baseline	Productivity Plan	Productivity Actual				
167	83	69	118%	118%	107.94%	118%	112%	107.94%				
Day Target	Day Plan(DTD)	Day Actual	OEE Day Baseline	OEE Day Plan	OEE Day Actual	Productivity Day Baseline	Productivity Day Plan	Productivity Day Actual				
303	219	233	118%	118%	92.34%	118%	112%	92.34%				
Week Target	Week Plan(WTD)	Week Actual	OEE Week Baseline	OEE Week Plan	OEE Week Actual	Productivity Week Baseline	Productivity Week Plan	Productivity Week Actual				
1450	831	757	118%	118%		118%	112%					

**S C O P E**

SKU	Order No.	Lot	Made	Order Date	RDD	RLT	ELT	SMV	Standard Hours	Status
99011918	17035582	80	21	17.12.2008	20.12.2008	3	-	14.200	18 h, 56 m	In Production - Remaining: 3 h, 29 m
96011156	17033494	160	-	18.12.2008	18.12.2008	0	-	14.733	39 h, 17 m	Next Lot
96010583	17035688	80	-	19.12.2008	20.12.2008	1	-	8.753	11 h, 40 m	Planned
96011153	17035771	80	-	19.12.2008	20.12.2008	1	-	13.500	18 h, 0 m	Planned

Workcenter Status

Production	Planning	Logistic	Purchasing
Maintenance	Quality	OPEX	EH&S

# Aranjarea si prioritizarea a comenzilor

Vă permite aranjarea si optimizarea realizarii comenzilor in functie de resursele disponibile in timp real

Mozilla Firefox

File Edit View History Bookmarks Tools Help

http://146.108.199.200/introdate.php?intro=0&ordernomodif=17035630&actiune=detalii&linie=&detalii=:17035582;17035636;17035630

Most Visited Getting Started Latest Headlines http://ads.bluelithium...

Search Web Bookmarks My Yahoo! Yahoo! Games Mail Shopping News Travel Music Autos Finance Comics

Logged as: app app. Your access level is 0.

Home Logout

Services

Manage orders

Line: All Select

Orders list:

Line 13301

Order No.	Lot	Start Date	Actual Start Date	Delivery Date	Status	Part No	SMV	Standard Hours	Week	Takt Time	Priority
17035582	80	17.12.2008	17.12.2008	20.12.2008	In Production	99011918	14.200	18 h, 56 m	51	194.33	modify
		Made: 16	Remaining Pieces: 64	Remaining Time: 3 h, 47 m	End Order						
17033494	160	18.12.2008	18.12.2008	18.12.2008	Next Lot	96011156	14.733	39 h, 17 m	51	194.33	modify delete
17035688	80	19.12.2008	19.12.2008	20.12.2008	Planned	96010583	8.753	11 h, 40 m	51	115.45	modify delete
17035771	80	19.12.2008	19.12.2008	20.12.2008	Planned	96011153	13.500	18 h, 0 m	51	194.33	modify delete

Line 13302

Order No.	Lot	Start Date	Actual Start Date	Delivery Date	Status	Part No	SMV	Standard Hours	Week	Takt Time	Priority
17035630	1200	17.12.2008	17.12.2008	18.12.2008	In Production	96008890	5.380	107 h, 36 m	51	54.46	modify
17035684	400	17.12.2008	17.12.2008	19.12.2008	Next Lot	96011154	14.300	95 h, 20 m	51	141.99	modify delete
17035909	160	17.12.2008	17.12.2008	20.12.2008	Planned	96008889	4.322	11 h, 31 m	51	49.14	modify delete
17035596	240	19.12.2008	19.12.2008	20.12.2008	Planned	96008888	4.535	18 h, 8 m	51	45.9	modify delete
17032867	400	19.12.2008	19.12.2008	24.12.2008	Planned	96008890	5.380	95 h, 52 m	51	54.46	modify delete
17034650	800	20.12.2008	20.12.2008	20.12.2008	Planned	96008890	5.380	71 h, 44 m	51	54.46	modify delete

Line 13303

Order No.	Lot	Start Date	Actual Start Date	Delivery Date	Status	Part No	SMV	Standard Hours	Week	Takt Time	Priority
17035636	80	19.12.2008	19.12.2008	20.12.2008	In Production	96009505	5.131	6 h, 50 m	51	67.68	modify
		Made: 40	Remaining Pieces: 40	Remaining Time: 1 h, 42 m	End Order						
17035190	1	19.12.2008	19.12.2008	20.12.2008	Next Lot	99011082	15.333	0 h, 15 m	51	155.18	modify delete
17035168	3	18.12.2008	18.12.2008	20.12.2008	Planned	99011739	15.600	0 h, 46 m	51	163.28	modify delete
17035246	7	19.12.2008	19.12.2008	20.12.2008	Planned	96010582	7.500	0 h, 52 m	51	81.3	modify delete

Done

Modify an order:

Lot:   
 Start Date:   
 Priority:   
 Delivery Date:   
 Week:   
 Takt Time:   
 Line:   
 Part No.:   
 Modify

Add a new order:

Order No.:   
 Lot:   
 Start Date:   
 Delivery Date:   
 Takt Time:   
 Line:   
 Part No.:   
 Add

Action list:

- Decreased Priority for Ordermo 705
- Increased Priority for Ordermo 703
- Increased Priority for Ordermo 705
- Changed the data for Ordermo 705
- Increased Priority for Ordermo 702
- Increased Priority for Ordermo 702
- Decreased Priority for Ordermo 705
- Decreased Priority for Ordermo 700
- Changed the data for Ordermo 700
- Changed the data for Ordermo 700

Details:

Undo latest action

# Calcul automat al incarcarii productiei

**Aveti posibilitatea de a face variante si precalculatii pentru a gasi varianta optima de realizare a comenzilor si incarcare a resurselor**

Mozilla Firefox

File Edit View History Bookmarks Tools Help

http://www.saturna.ro/zumbabel/nou/introdate.php?intro=ct

Page Load Error http://www.s...php?intro=ct http://www.satu...klog.php?ses=1

Logged as: app app. Your access level is 0.

Home Logout

Services

Week: 1 Line: 13301 Select

List of Orders arranged by Shifts

	Day 1	Day 2	Day 3	Day 4	Day 5	Day 6	Day 7
Shift 1	17033725 - 240 from 240 17033426 - 80 from 80 17031758 - 10 from 10 17032718 - 400 from 400 17032729 - 32 from 60	17034734 - 5 from 40 17024323 - 80 from 80 17034543 - 10 from 10 17034645 - 400 from 400 17034454 - 32 from 60	17045334 - 130 from 130 17036573 - 30 from 30 17083245 - 90 from 90 17072573 - 124 from 220	17056337 - 110 from 320 17033426 - 95 from 95 17031758 - 230 from 230 17032718 - 5 from 5 17032729 - 12 from 40	17037724 - 83 from 83 17047889 - 20 from 20 17032232 - 300 from 300		
Shift 2	17033729 - 28 from 60 17034380 - 120 from 120 17034734 - 35 from 40	17034454 - 28 from 60 17023423 - 80 from 80 17033734 - 240 from 240 17034542 - 160 from 160 17034537 - 320 from 320	17072573 - 96 from 220 17045663 - 80 from 80 17045642 - 50 from 50 17045273 - 160 from 160 17056337 - 210 from 320	17032729 - 28 from 40 17032445 - 100 from 100 17084736 - 55 from 55			
Shift 3							

Compute targets and takt times for the week

Done

start Total Comm... Mozilla Firefox mc - /usr/lo... Zend Develo... 2 Yahoo! ... untitled - Paint XnView - [... EN 17:14



# A.R.G.U.S.

**A**utomated **R**ealtime **G**rouped **U**nified **S**urveillance

Management de productie in timp real

**On line, On time and On Screen**